

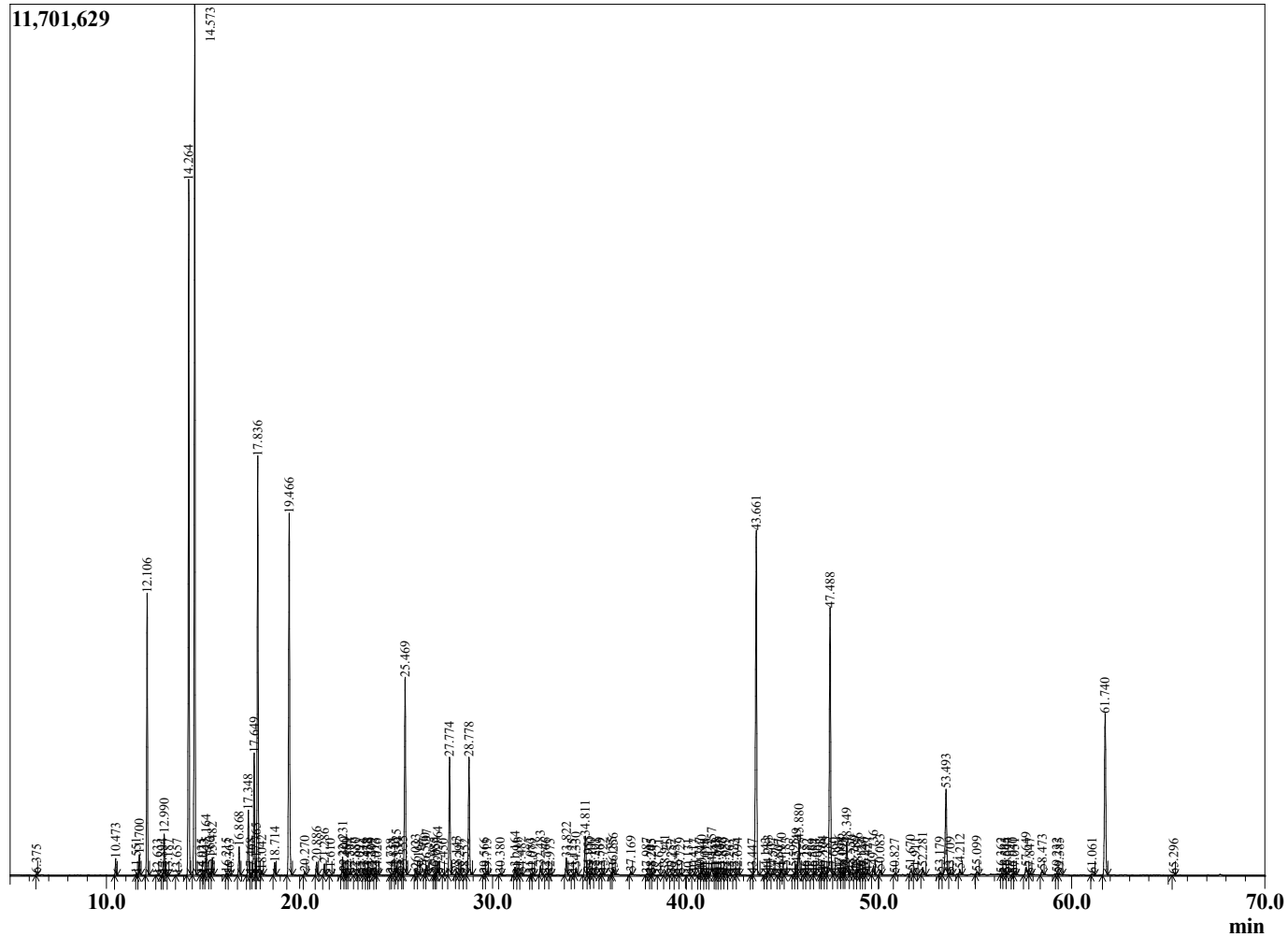
Sample Information

Sample Type : 3/28/2024 12:34:14 AM  
 Sample Name : Essential Oil  
 Injection : Achillea millefolium  
 Volume : 0.10

Yarrow Blue  
 Lot# BUF19-FK  
 Country: Bulgaria



Chromatogram Achillea millefolium



R.Time	Name	Area%
4.516	2-Ethylfuran	0.01
6.375	1-Octene	0.02
10.473	Santolinatriene	0.25
11.551	Tricyclene	0.03
11.700	alpha-Thujene	0.33
12.106	alpha-Pinene	4.62
12.633	Thujadiene isomer	0.01
12.894	alpha-Fenchene	0.02
12.990	Camphene	0.68
13.187	Thuja-2,4(10)-diene	0.01
13.657	Benzaldehyde	0.01
14.264	Sabinene	12.99
14.573	beta-Pinene	16.61
14.925	3-Octanone	0.02
15.033	para-Menth-3-ene	0.01
15.164	Myrcene	0.48
15.366	Ocimene analogue	0.05
15.482	Yomogi alcohol	0.31
16.215	alpha-Phellandrene	0.03
16.363	delta-3-Carene	0.01
16.868	alpha-Terpinene	0.54
17.348	para-Cymene	1.21
17.468	Unidentified	0.02
17.649	Limonene	2.41
17.765	beta-Phellandrene	0.15
17.836	1,8-Cineole	8.13
18.042	cis-beta-Ocimene	0.09
18.714	trans-beta-Ocimene	0.24
19.466	Artemisia ketone	7.68
20.270	trans-Sabinene hydrate	0.07
20.886	Artemisia alcohol	0.26
21.286	Terpinolene	0.23
21.610	para-Cymenene	0.01
22.231	Linalool	0.40
22.300	cis-Sabinene hydrate	0.04
22.459	Unidentified	0.01
22.594	Nonanal	0.04
22.880	Thujol	0.04
23.093	Unidentified	0.01
23.316	cis-Chrysanthenol	0.03
23.478	beta-Thujone	0.03
23.552	Unidentified	0.01
23.709	Chrysanthenone	0.05
23.913	cis-para-Menth-2-en-1-ol	0.03
24.026	Unidentified	0.02
24.738	Unidentified	0.01
24.853	Nopinone	0.04
25.025	trans-Pinocarveol	0.24
25.139	trans-para-Menth-2-en-1-ol	0.04
25.355	trans-Verbenol	0.05
25.469	Camphor	4.16
26.023	trans-Chrysanthemal	0.12
26.168	Sabina ketone	0.02
26.500	Pinocarvone	0.13
26.597	beta-Artemisia acetate	0.23
26.985	Umbellulone	0.03

R.Time	Name	Area%
27.054	delta-Terpineol	0.05
27.164	Borneol	0.29
27.450	Isopinocampone	0.01
27.774	Terpinen-4-ol	2.57
28.143	Myrcenone isomer	0.09
28.297	Unidentified	0.01
28.552	Unidentified	0.02
28.778	alpha-Terpineol	2.70
29.566	Verbenone	0.03
29.713	trans-Piperitol	0.03
30.380	Unidentified	0.03
31.164	trans-Chrysanthenyl acetate	0.17
31.291	Unidentified	0.01
31.482	Myrcenone isomer	0.05
31.983	Cuminaldehyde	0.03
32.079	Carvone	0.02
32.483	Linalyl acetate	0.21
32.766	Unidentified	0.04
32.973	trans-Chrysanthenyl acetate	0.02
33.822	4-Thujen-2alpha-yl acetate	0.38
34.125	cis-Ascidol glycol	0.01
34.330	Unidentified	0.16
34.811	Bornyl acetate	1.04
34.955	Unidentified	0.08
35.100	Unidentified	0.02
35.301	trans-Ascidol glycol	0.03
35.569	trans-Pinocarvyl acetate	0.03
35.722	Unidentified	0.03
36.185	Unidentified	0.04
36.256	Unidentified	0.15
37.169	Unidentified	0.07
37.987	delta-Elemene	0.03
38.205	Elemene isomer	0.02
38.245	Unidentified	0.02
38.621	Unidentified	0.01
38.941	gamma-Terpinyl acetate	0.10
39.252	Eugenol	0.02
39.457	Unidentified	0.01
39.729	Neryl acetate	0.04
40.131	Unidentified	0.01
40.417	alpha-Ylangene	0.03
40.717	Unidentified	0.05
40.840	alpha-Copaene	0.11
41.018	Geranyl acetate	0.03
41.123	Unidentified	0.02
41.357	beta-Bourbonene	0.30
41.543	alpha-Bourbonene	0.01
41.628	beta-Cubebene	0.04
41.739	beta-Elemene	0.05
41.896	cis-Jasmone	0.05
42.059	Unidentified	0.04
42.263	Unidentified	0.01
42.523	Unidentified	0.01
42.694	cis-beta-Caryophyllene	0.03
43.447	Lavandulyl isobutyrate	0.02
43.661	beta-Caryophyllene	8.81
44.143	Unidentified	0.03
44.283	cis-Cadina-1(6),4-diene	0.10
44.507	trans-alpha-Bergamotene	0.04
44.807	beta-Copaene	0.01
44.970	cis-beta-Farnesene	0.15
45.183	Isogermacrene D	0.03

R.Time	Name	Area%
45.598	trans-Murrola-3,5-diene	0.02
45.749	trans-beta-Farnesene	0.26
45.880	alpha-Humulene	0.84
46.157	Alloaromadendrene	0.03
46.282	Unidentified	0.02
46.569	Dehydro-sesquincineole	0.02
46.684	Unidentified	0.02
46.998	Selina-4,11-diene	0.01
47.104	trans-Cadina-1(6),4-diene	0.08
47.285	gamma-Curcumene	0.06
47.488	Germacrene D	6.83
47.660	trans-beta-Bergamotene	0.03
47.956	beta-Selinene	0.10
48.098	trans,trans-alpha-Farnesene	0.06
48.195	Unidentified	0.03
48.349	alpha-Zingiberene + Bicyclogermacrene	0.80
48.556	alpha-Murolene	0.09
48.789	Lavandulyl isovalerate	0.09
48.936	delta-Amorphene+(E,E)-alpha-Farnesene	0.16
49.127	beta-Bisabolene	0.01
49.240	beta-Curcumene	0.03
49.427	gamma-Cadinene	0.07
49.736	delta-Cadinene	0.22
50.083	beta-Sesquiphellandrene	0.12
50.827	alpha-Cadinene	0.02
51.670	Unidentified + Unidentified	0.15
51.911	Unidentified	0.04
52.281	trans-Nerolidol	0.18
53.179	Spathulenol	0.06
53.493	Caryophyllene oxide	2.43
53.709	Globulol	0.06
54.212	Viridiflorol	0.13
55.099	Humulene epoxide II	0.10
56.362	gamma-Eudesmol	0.02
56.565	Unidentified	0.03
56.644	Caryophylla-4(12),8(13)-dien-5-ol	0.03
56.940	tau-Cadinol	0.03
57.051	epi-alpha-Cadinol	0.04
57.649	alpha-Eudesmol	0.27
57.847	Unidentified	0.03
58.473	Unidentified	0.14
59.232	Unidentified	0.05
59.385	alpha-Bisabolol	0.04
61.061	Pentadecanal	0.03
61.740	Chamazulene	4.16
65.296	Unidentified	0.02
		100.00